



# Missouri Weekly Influenza Surveillance Report 2021-2022 Influenza Season<sup>1</sup>

## Week 1: January 2, 2022 – January 8, 2022

*All data are preliminary and may change as more reports are received.*

### Summary:

- The estimated influenza activity in Missouri is Widespread<sup>2</sup>.
- During Week 1, a total of 2,088 laboratory-positive<sup>3</sup> influenza cases (1,856 influenza A, 228 influenza B and 4 untyped) were reported. A season-to-date total of 13,140 laboratory-positive influenza cases (11,882 influenza A, 1,177 influenza B, and 81 untyped) have been reported in Missouri as of Week 1. The influenza type for reported season-to-date cases includes 90.4% influenza A, 9.0% influenza B, and 0.6% untyped. The percentage of respiratory specimens testing positive for influenza in Missouri laboratories reporting to the National Respiratory and Enteric Virus Surveillance System (NREVSS) decreased to 3.11% during Week 1, with the most common subtype being A(H3N2) (Figure 5).
- Influenza-like illness (ILI) activity for Week 1 was above baseline for the hospital emergency room visit chief complaint data reported through ESSENCE. The reported percentage of visits for ILI through ESSENCE was 4.19% (Figure 6).<sup>4</sup>
- Four influenza-associated deaths have been reported in Missouri as of Week 1.<sup>5</sup>
- One influenza or ILI-associated outbreak has been reported in Missouri as of Week 1.
- National influenza surveillance information is prepared by CDC and is included in the weekly FluView report, which is available online at <http://www.cdc.gov/flu/weekly/fluactivitysurv.htm>.

---

<sup>1</sup>The 2021- 2022 influenza season begins CDC Week 40 (week ending October 9, 2021) and ends CDC Week 39 (week ending October 1, 2022).

<sup>2</sup>Widespread is defined as: Increased influenza-like illness from sentinel providers (ILI) in three or more regions and large numbers of laboratory-confirmed influenza cases in those regions.

<sup>3</sup>Laboratory-positive influenza includes the following test methods: rapid influenza diagnostic tests (antigen), reverse transcriptase polymerase chain reaction (RT-PCR) and other molecular assays, immunofluorescence antibody staining (Direct (DFA) or Indirect (IFA)), or viral culture.

<sup>4</sup>ILI is defined by ESSENCE as Emergency Department chief complaints for Influenza or (FeverPlus and (Cough or SoreThroat) and not NonILIFevers).

<sup>5</sup>All influenza-associated deaths became reportable in Missouri in 2016.

## Surveillance Data:

### Interactive Maps

The jurisdiction-specific influenza data are provided through interactive maps available at <https://arcg.is/G5LWv>.

Click on the jurisdiction to view the influenza data specific to that jurisdiction.

- Reported Laboratory-positive Influenza Cases by Influenza Type by Jurisdiction, CDC Week 1
- Reported Week-specific Rate per 100,000 Population, CDC Week 1
- Reported Laboratory-positive Influenza Cases by Influenza Type by Jurisdiction, Season-to-Date
- Reported Rate per 100,000 Population, Season-to-Date

### Data Figures

**Figure 1. Number of Laboratory-positive<sup>†</sup> Influenza Cases by Influenza Type, Missouri, CDC Weeks 51-1 (December 19, 2021 – January 8, 2022)<sup>\*</sup>**

Influenza Type	Week 51	Week 52	Week 1	2021-2022* Season-to-Date
Influenza A	2,730	2,707	1,856	11,882
Influenza B	127	185	228	1,177
Influenza Unknown Or Untyped	14	4	4	81
<b>Total</b>	<b>2,871</b>	<b>2,896</b>	<b>2,088</b>	<b>13,140</b>

<sup>†</sup>Laboratory-positive influenza includes the following test methods: rapid influenza diagnostic tests (antigen), reverse transcriptase polymerase chain reaction (RT-PCR) and other molecular assays, immunofluorescence antibody staining (Direct (DFA) or Indirect (IFA)), or viral culture.

\*Influenza season begins with the week ending October 9, 2021 (CDC Week 40) Data Source: Missouri Health Information Surveillance System (WebSurv).

**Figure 2. Number of Laboratory-positive<sup>†</sup> Influenza Cases and Case Rates by Age Group, Missouri, CDC Week 1 (January 2, 2022 – January 8, 2022)<sup>\*\*</sup>**

Age Group	Week 1 Cases	Week 1 Rate <sup>‡</sup>	2021-22* Season-to-Date	2021-2022* Season-to-Date Rate <sup>‡</sup>
00-04	322	86.01	1,570	419.38
05-24	782	48.74	6,868	428.04
25-49	535	27.96	2,658	138.91
50-64	217	17.55	1,039	84.04
65+	232	24.50	1,005	105.24
<b>Total</b>	<b>2,088</b>	<b>34.32</b>	<b>13,140</b>	<b>215.99</b>

<sup>†</sup>Laboratory-positive influenza includes the following test methods: rapid influenza diagnostic tests (antigen), reverse transcriptase polymerase chain reaction (RT-PCR) and other molecular assays, immunofluorescence antibody staining (Direct (DFA) or Indirect (IFA)), or viral culture.

\*Influenza season begins week ending October 3, 2020 (CDC Week 40) Data Source: Missouri Health Information Surveillance System (WebSurv)

<sup>‡</sup>Incidence Rate per 100,000 population

**Figure 3. Number of Laboratory-positive<sup>†</sup> Influenza Cases and Case Rates by Region, Missouri, CDC Week 1 (January 2, 2022 – January 8, 2022)<sup>\*†</sup>**

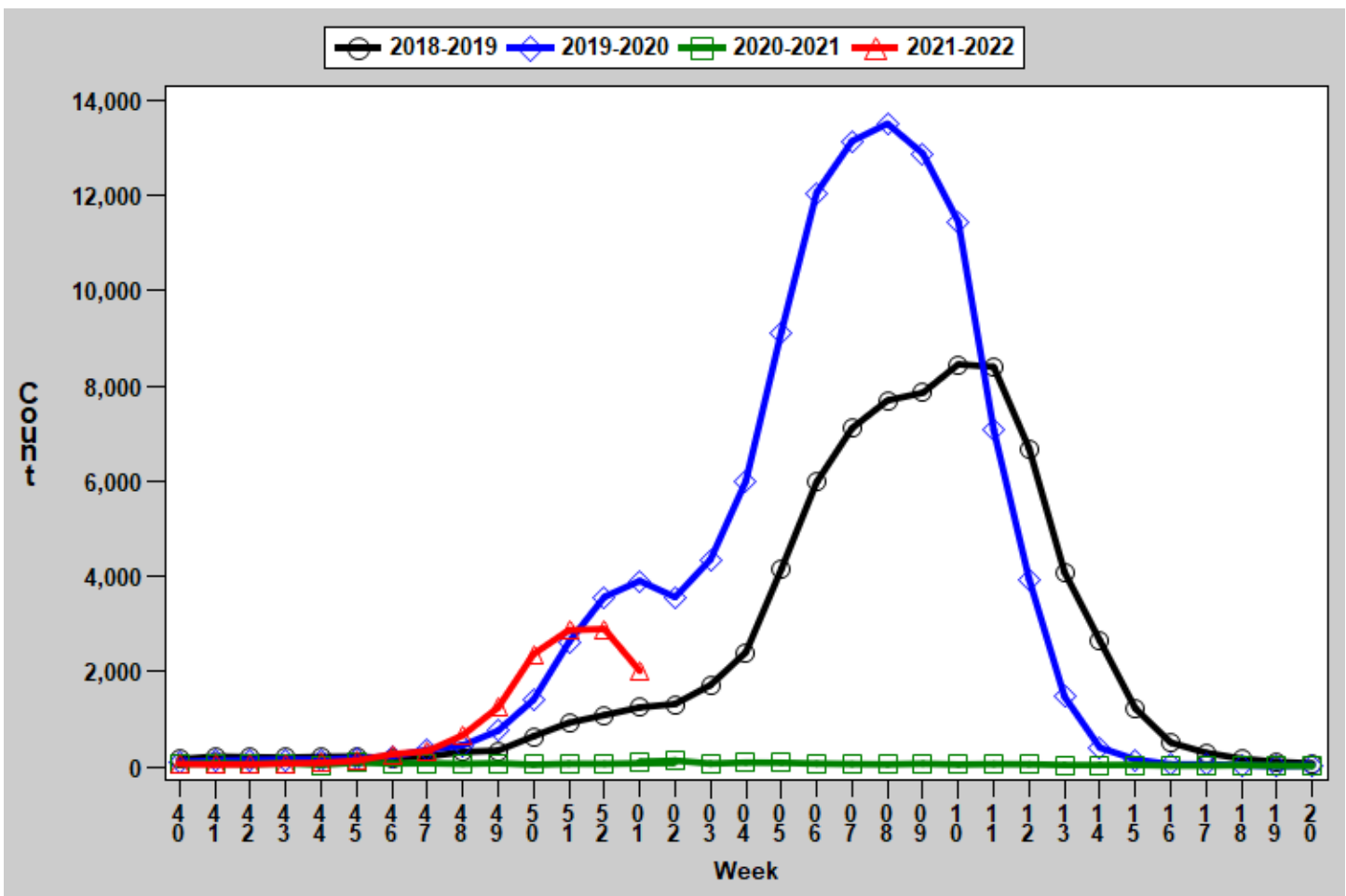
Region	Week 1 Cases	Week 1 Rate <sup>‡</sup>	2021-22* Season-to-Date	2021-22* Season-to-Date Rate <sup>‡</sup>
Central	197	29.10	1,831	270.46
Eastern	735	32.43	4,682	206.61
Northwest	494	30.92	2,723	170.45
Southeast	209	44.31	1,748	370.58
Southwest	453	42.29	2,156	201.25
<b>Total</b>	<b>2,088</b>	<b>34.32</b>	<b>13,140</b>	<b>215.99</b>

<sup>†</sup>Laboratory-positive influenza includes the following test methods: rapid influenza diagnostic tests (antigen), reverse transcriptase polymerase chain reaction (RT-PCR) and other molecular assays, immunofluorescence antibody staining (Direct (DFA) or Indirect (IFA)), or viral culture.

<sup>\*</sup>Influenza season begins week ending October 3, 2020 (CDC Week 40) Data Source: Missouri Health Information Surveillance System (WebSurv)

<sup>‡</sup>Incidence Rate per 100,000 population

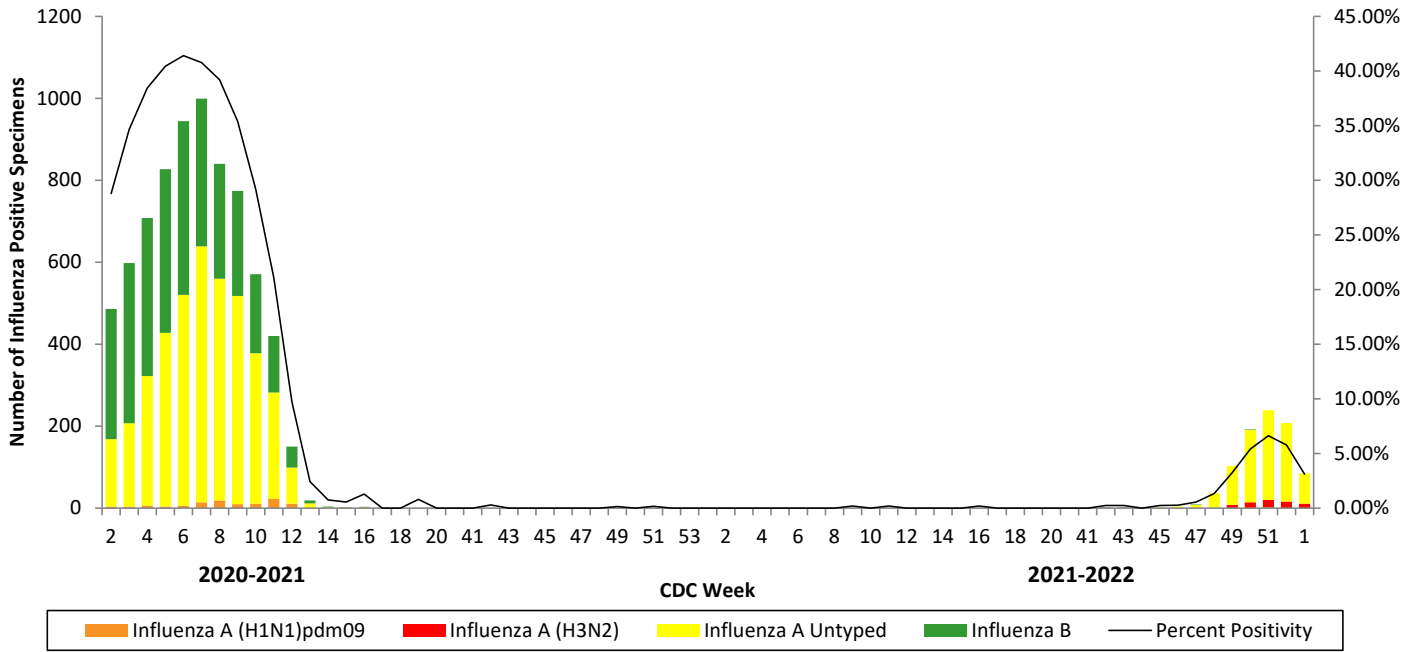
**Figure 4. Number of Laboratory-positive<sup>†</sup> Influenza Cases by CDC Week, Missouri, 2018-2022<sup>\*</sup>**



<sup>†</sup>Laboratory-positive influenza includes the following test methods: rapid influenza diagnostic tests (antigen), reverse transcriptase polymerase chain reaction (RT-PCR) and other molecular assays, immunofluorescence antibody staining (Direct (DFA) or Indirect (IFA)), or viral culture.

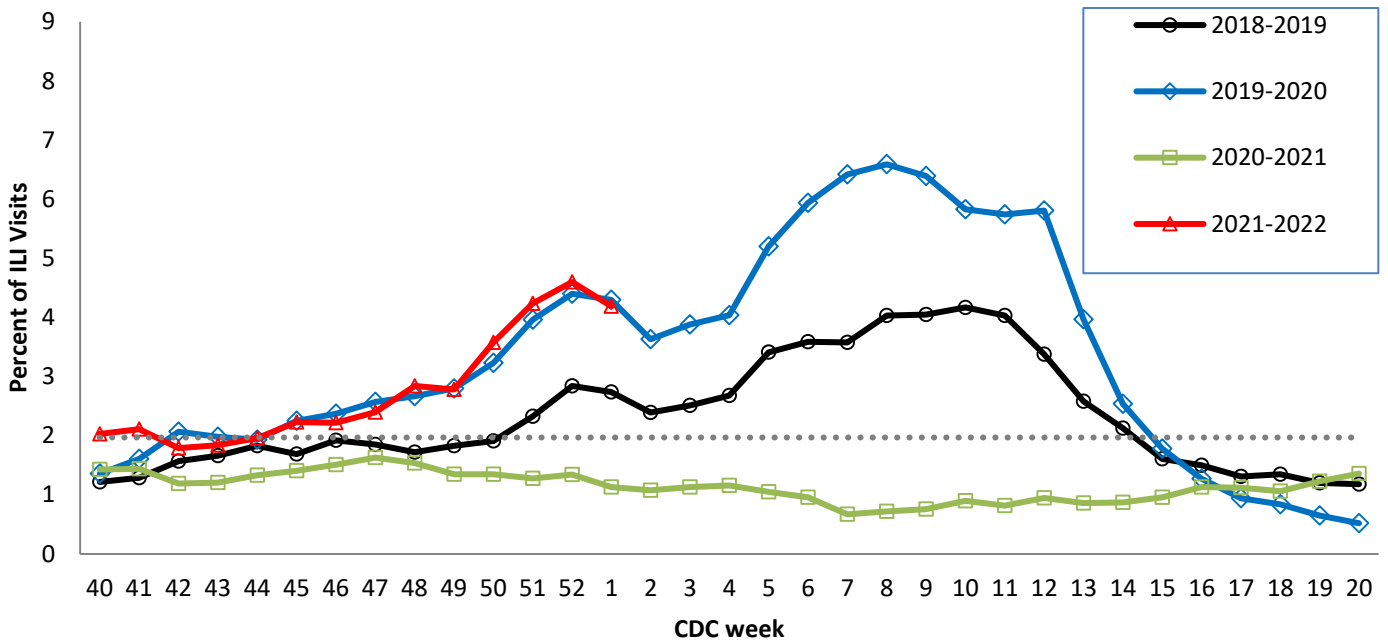
<sup>\*</sup>2021-2022 season-to-date through the week ending May 21, 2022 (Week 20).Data Source: Missouri Health Information Surveillance System (WebSurv)

**Figure 5. Season-to-Date PCR (+) Tests for Influenza in Missouri**



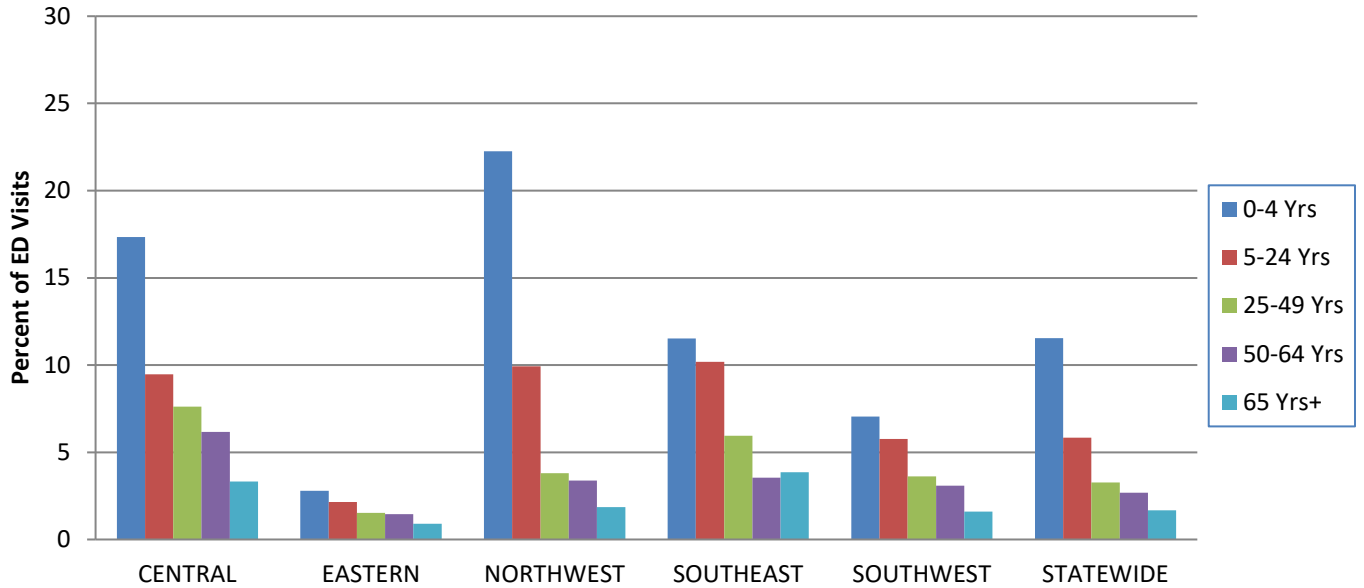
Data Source: National Respiratory and Enteric Virus Surveillance System (NREVSS), Centers for Disease Control and Prevention (CDC). 2021-2022 season-to-date through the week ending January 8, 2022 (Week 1).

**Figure 6. Percentage of Emergency Department (ED) Visits for Influenza-like Illness (ILI) in ESSENCE Participating Hospitals, 2018-2022 Influenza Seasons\*\***



\*\*The ESSENCE ILI Baseline is the mean percent of ILI visits for each week during the previous three flu seasons when percentage of ILI visits were less than 2% of total visits, plus two standard deviations. Data Source: Missouri Department of Health and Senior Services (DHSS), Bureau of Reportable Disease Informatics, ESSENCE version 1.20.

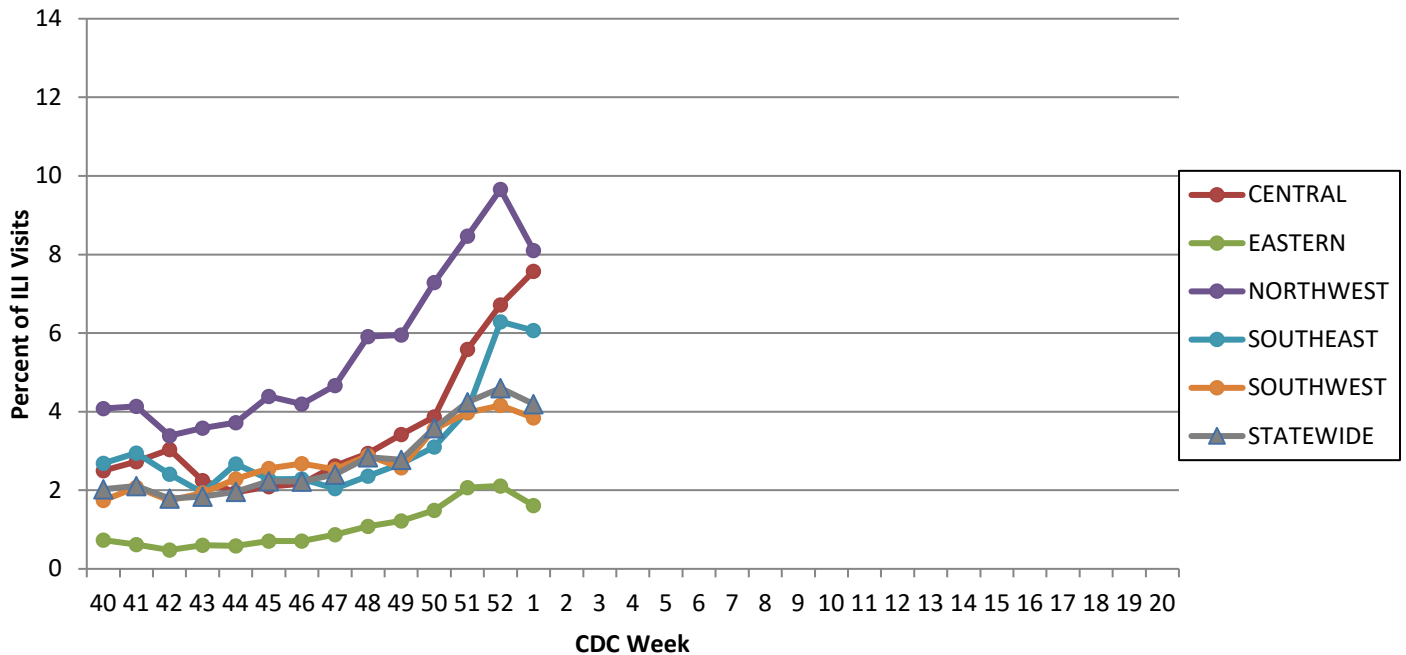
**Figure 7. Percentage of Emergency Department (ED) Visits for Influenza-like Illness (ILI) in ESSENCE Participating Hospitals, by Age Group, Region and Statewide, Week 1, 2021\***



Data Source: Missouri Department of Health and Senior Services (DHSS), Bureau of Reportable Disease Informatics, ESSENCE version 1.20.

\*The ILI data from a small number of sites located in the Northwest Region of the state is temporarily unavailable in ESSENCE. Therefore, the ILI data for the Northwest Region should be interpreted with caution.

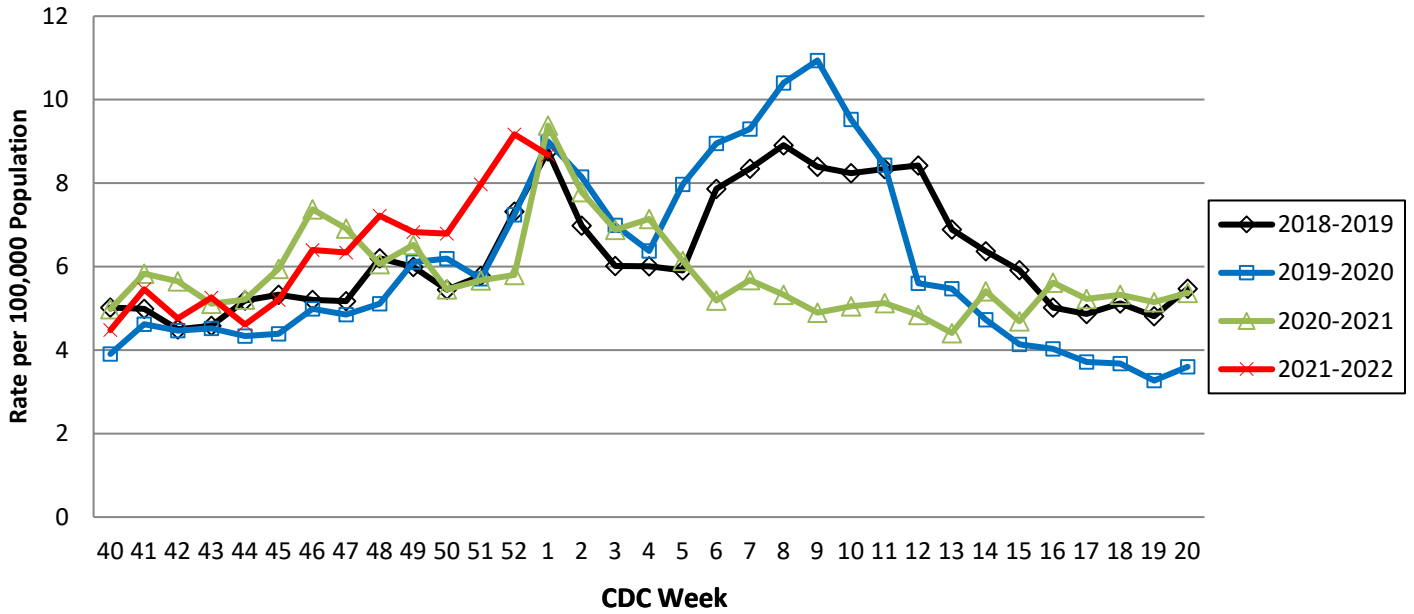
**Figure 8. Percentage of Emergency Department (ED) Visits for Influenza-like Illness (ILI) in ESSENCE Participating Hospitals, by Region and Statewide, 2021-2022 Influenza Season\***



Data Source: Missouri Department of Health and Senior Services (DHSS), Bureau of Reportable Disease Informatics, ESSENCE version 1.20.

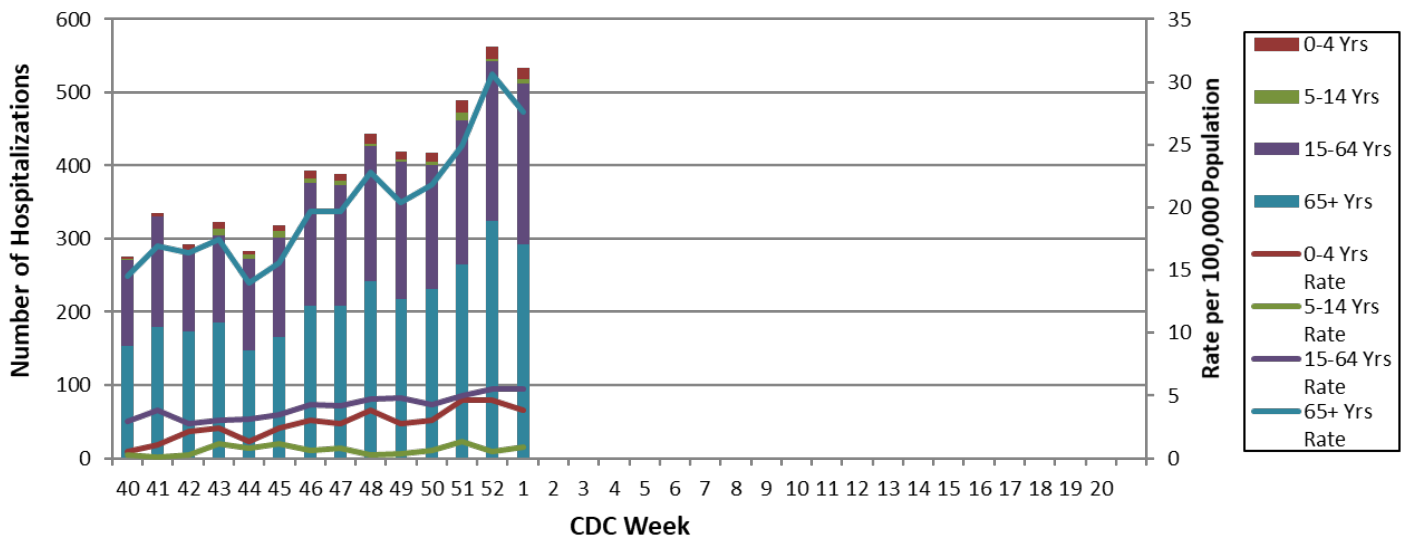
\*The ILI data from a small number of sites located in the Northwest Region of the state is temporarily unavailable in ESSENCE. Therefore, the ILI data for the Northwest Region should be interpreted with caution.

**Figure 9. Weekly Rate of Patients Hospitalized with Influenza and/or Pneumonia Syndromes in Missouri Hospitals, 2018-2022 Influenza Seasons**



Data Source: Missouri Department of Health and Senior Services (DHSS), Bureau of Reportable Disease Informatics, HL7 Messaging Portal. Population data from Missouri Census Data Center 2017 (<https://census.missouri.edu>).

**Figure 10. Number of Patients Hospitalized with Influenza and/or Pneumonia Syndromes in Participating Missouri Hospitals, by Age Group, Week 1, 2021-2022 Influenza Season**



Data Source: Missouri Department of Health and Senior Services (DHSS), Bureau of Reportable Disease Informatics, HL7 Messaging Portal.

## **Additional Influenza Data Sources:**

**Centers for Disease Control and Prevention: National Influenza Surveillance (FluView):**  
<http://www.cdc.gov/flu/weekly/fluactivitysurv.htm>

**The National Respiratory and Enteric Virus Surveillance System (NREVSS):**  
<https://www.cdc.gov/surveillance/nrevss/>

**World Health Organization: International Influenza Surveillance:**  
[http://www.who.int/influenza/surveillance\\_monitoring/en/](http://www.who.int/influenza/surveillance_monitoring/en/)