



Missouri Weekly Influenza Surveillance Report 2018-2019 Influenza Season¹

Week 44: October 28 – November 3, 2018

All data are preliminary and may change as more reports are received.

Summary:

- The estimated influenza activity in Missouri is Sporadic².
- During Week 44, a total of 115 laboratory-positive³ influenza cases (73 influenza A, 39 influenza B, and three untyped) were reported. A season-to-date total of 809 laboratory-positive influenza cases have been reported in Missouri as of Week 44. The influenza type for reported season-to-date cases includes 59.8% influenza A, 39.7% influenza B and 0.5% untyped. No laboratory-positive cases of influenza were reported by the Missouri State Public Health Laboratory (MSPHL) during Week 44. The percentage of respiratory specimens testing positive for influenza in Missouri laboratories reporting to the National Respiratory and Enteric Virus Surveillance System (NREVSS) also remained low during Week 44 (Figure 6).
- Influenza-like illness (ILI) activity was above baseline for both the Missouri Outpatient ILI Surveillance Network (ILINet) and the hospital emergency room visit chief complaint data reported through ESSENCE. The reported percentage of visits for ILI was 1.89% (Figure 5) and 1.88% (Figure 7) through ILINet and ESSENCE respectively.⁴ The ILI data from a small number of sites located in the Northwest Region of the state is currently unavailable in ESSENCE. Therefore, the ILI data for the Northwest Region should be interpreted with caution.
- One influenza-associated death has been reported in Missouri as of Week 44.⁵ During Week 43, 55 deaths involving Pneumonia and Influenza (P&I) were reported to the Bureau of Vital Records, resulting in a season-to-date total of 194 P&I associated deaths in Missouri.⁶
- No influenza or ILI-associated outbreaks or school closures have been reported in Missouri as of Week 44.
- Influenza activity remained low in the United States during Week 43. National influenza surveillance information is prepared by CDC and is included in the weekly FluView report, which is available online at <http://www.cdc.gov/flu/weekly/fluactivitysurv.htm>.

¹The 2018-2019 influenza season begins CDC Week 40 (week ending October 6, 2018) and ends CDC Week 39 (week ending September 28, 2019).

²Sporadic is defined as: Small numbers of laboratory-confirmed influenza cases or a single laboratory-confirmed influenza outbreak has been reported, but there is no increase in cases of ILI.

³Laboratory-positive influenza includes the following test methods: rapid influenza diagnostic tests (antigen), reverse transcriptase polymerase chain reaction (RT-PCR) and other molecular assays, immunofluorescence antibody staining (Direct (DFA) or Indirect (IFA)), or viral culture.

⁴Influenza-like illness (ILI) is defined by ILINet as fever (temperature of 100°F [37.8°C] or greater) and a cough and/or a sore throat without a known cause other than influenza. ILI is defined by ESSENCE as Emergency Department chief complaints for Influenza or (FeverPlus and (Cough or SoreThroat) and not NonILIFevers).

⁵All influenza-associated deaths became reportable in Missouri in 2016.

⁶The P&I data are available one week later. The P&I data for the CDC Week provided is the most current data available.

Surveillance Data:

Interactive Maps

The jurisdiction-specific influenza data are provided through interactive maps available at <http://bit.ly/MoFluMaps>. Click on the jurisdiction to view the influenza data specific to that jurisdiction.

- Reported Laboratory-positive Influenza Cases by Influenza Type by Jurisdiction, CDC Week 44
- Reported Week-specific Rate per 100,000 Population, CDC Week 44
- Reported Laboratory-positive Influenza Cases by Influenza Type by Jurisdiction, Season-to-Date
- Reported Rate per 100,000 Population, Season-to-Date

Data Figures

Figure 1. Number of Laboratory-positive[†] Influenza Cases by Influenza Type, Missouri, CDC Week 44 (October 28, 2018 – November 3, 2018)^{*}

Influenza Type	Week 42	Week 43	Week 44	2018-2019* Season-to-Date
Influenza A	112	93	73	484
Influenza B	72	66	39	321
Influenza Unknown Or Untyped	0	0	3	4
Total	184	159	115	809

[†]Laboratory-positive influenza includes the following test methods: rapid influenza diagnostic tests (antigen), reverse transcriptase polymerase chain reaction (RT-PCR) and other molecular assays, immunofluorescence antibody staining (Direct (DFA) or Indirect (IFA)), or viral culture.

^{*}Influenza season begins week ending October 6, 2018 (CDC Week 40) Data Source: Missouri Health Information Surveillance System (WebSurv).

Figure 2. Number of Laboratory-positive[†] Influenza Cases and Case Rates by Age Group, Missouri, CDC Week 44 (October 28, 2018 – November 3, 2018)^{}**

Age Group	Week 44 Cases	Week 44 Rate [‡]	2018-2019* Season-to-Date	2018-2019* Season-to-Date Rate [‡]
00-04	16	4.27	129	34.46
05-24	43	2.68	297	18.51
25-49	28	1.46	207	10.82
50-64	11	0.89	91	7.36
65+	17	1.78	85	8.90
Total	115	1.89	809	13.30

[†]Laboratory-positive influenza includes the following test methods: rapid influenza diagnostic tests (antigen), reverse transcriptase polymerase chain reaction (RT-PCR) and other molecular assays, immunofluorescence antibody staining (Direct (DFA) or Indirect (IFA)), or viral culture.

^{*}Influenza season begins week ending October 6, 2018 (CDC Week 40) Data Source: Missouri Health Information Surveillance System (WebSurv)

[‡]Incidence Rate per 100,000 population

Figure 3. Number of Laboratory-positive[†] Influenza Cases and Case Rates by Region, Missouri, CDC Week 44 (October 28, 2018 – November 3, 2018)^{}**

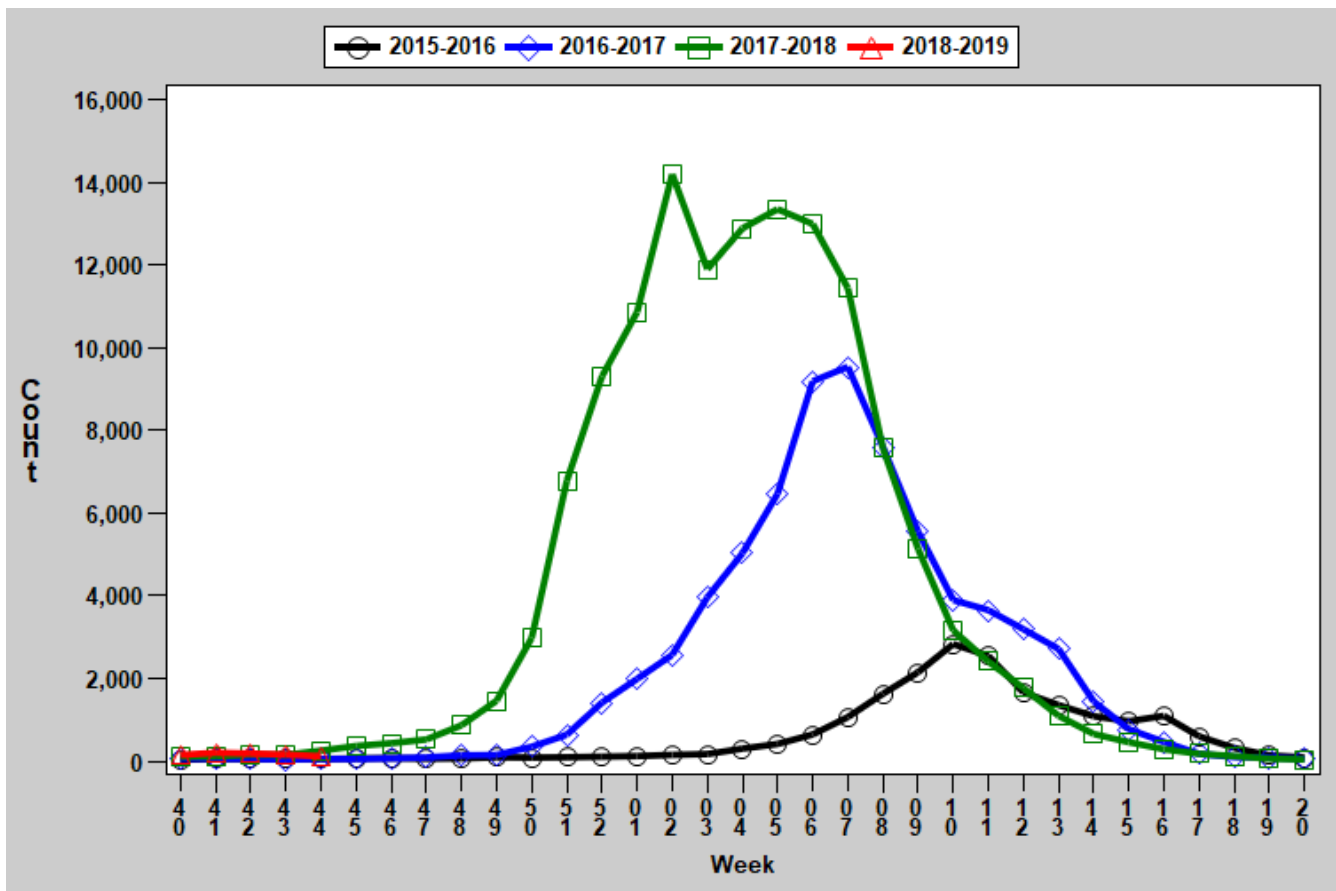
Region	Week 44 Cases	Week 44 Rate [‡]	2018-2019* Season-to-Date	2018-2019* Season-to-Date Rate [‡]
Central	7	1.03	105	15.51
Eastern	22	0.97	151	6.66
Northwest	20	1.25	110	6.89
Southeast	43	9.12	330	69.96
Southwest	23	2.15	113	10.55
Total	115	1.89	809	13.30

[†]Laboratory-positive influenza includes the following test methods: rapid influenza diagnostic tests (antigen), reverse transcriptase polymerase chain reaction (RT-PCR) and other molecular assays, immunofluorescence antibody staining (Direct (DFA) or Indirect (IFA)), or viral culture.

*Influenza season begins week ending October 6, 2018 (CDC Week 40) Data Source: Missouri Health Information Surveillance System (WebSurv)

[‡]Incidence Rate per 100,000 population

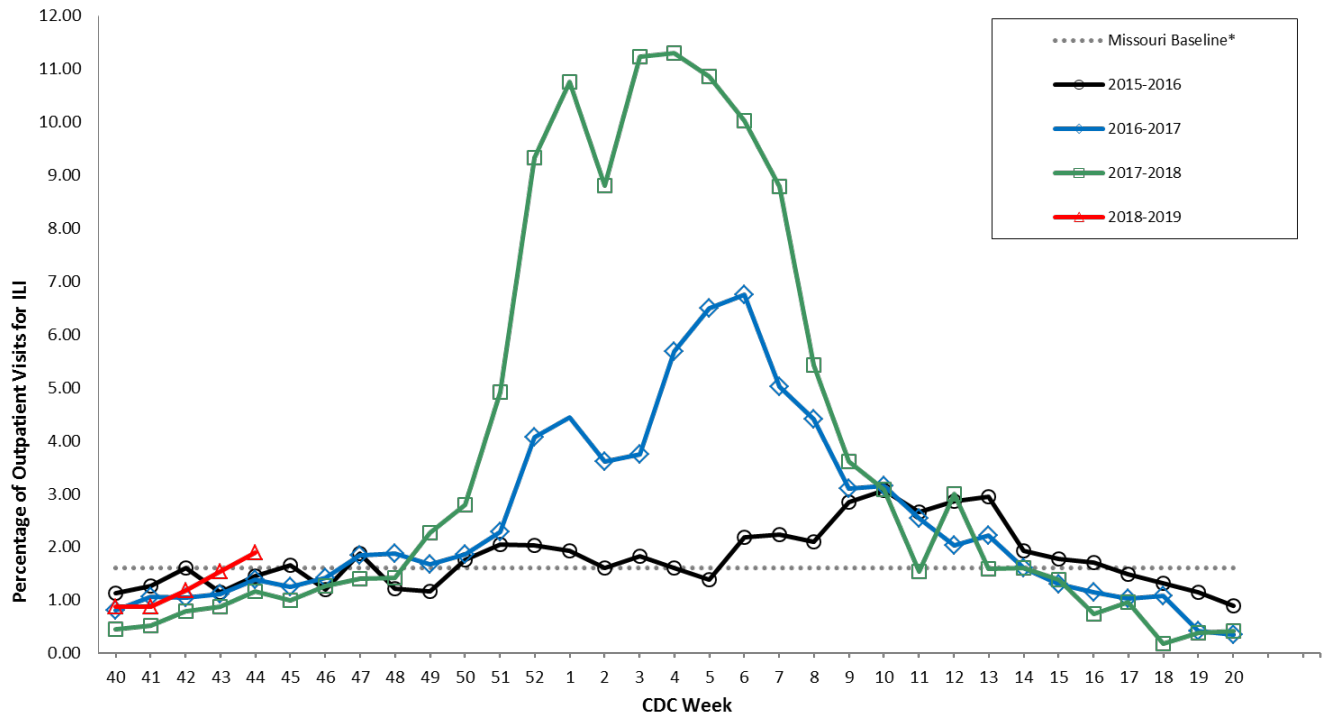
Figure 4. Number of Laboratory-positive[†] Influenza Cases by CDC Week, Missouri, 2015-2019^{*}



[†]Laboratory-positive influenza includes the following test methods: rapid influenza diagnostic tests (antigen), reverse transcriptase polymerase chain reaction (RT-PCR) and other molecular assays, immunofluorescence antibody staining (Direct (DFA) or Indirect (IFA)), or viral culture.

*2018-2019 season-to-date through the week ending May 18, 2019 (Week 20).Data Source: Missouri Health Information Surveillance System (WebSurv).

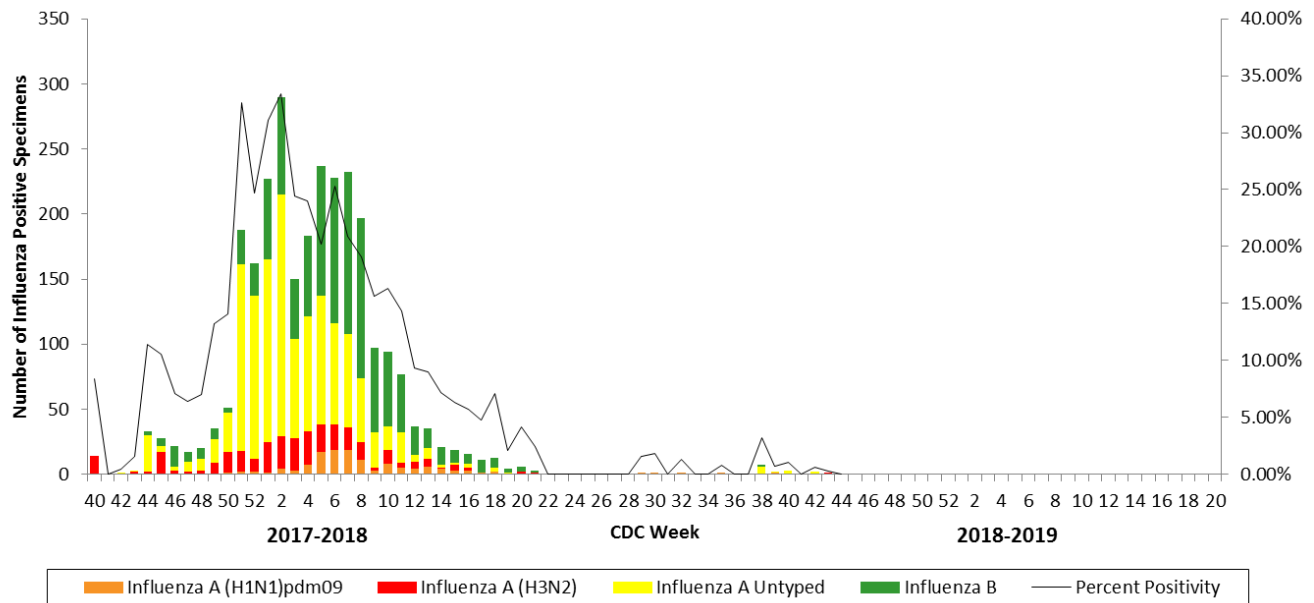
Figure 5. Percentage of Outpatient Visits for Influenza-like Illness (ILI), Missouri Outpatient ILI Surveillance Network (ILINet) 2015-2019*†



*The ILINet Region 7 (MO, IA, KS, NE) baseline is the mean percentage of patient visits for ILI during non-influenza weeks for the previous three seasons, plus two standard deviations. A non-influenza week is defined as periods of two or more consecutive weeks in which each week accounted for less than 2% of the season's total number of specimens that tested positive for influenza. Data Source: U.S. Outpatient Influenza-like Illness Surveillance Network (ILINet), Centers for Disease Control and Prevention (CDC).

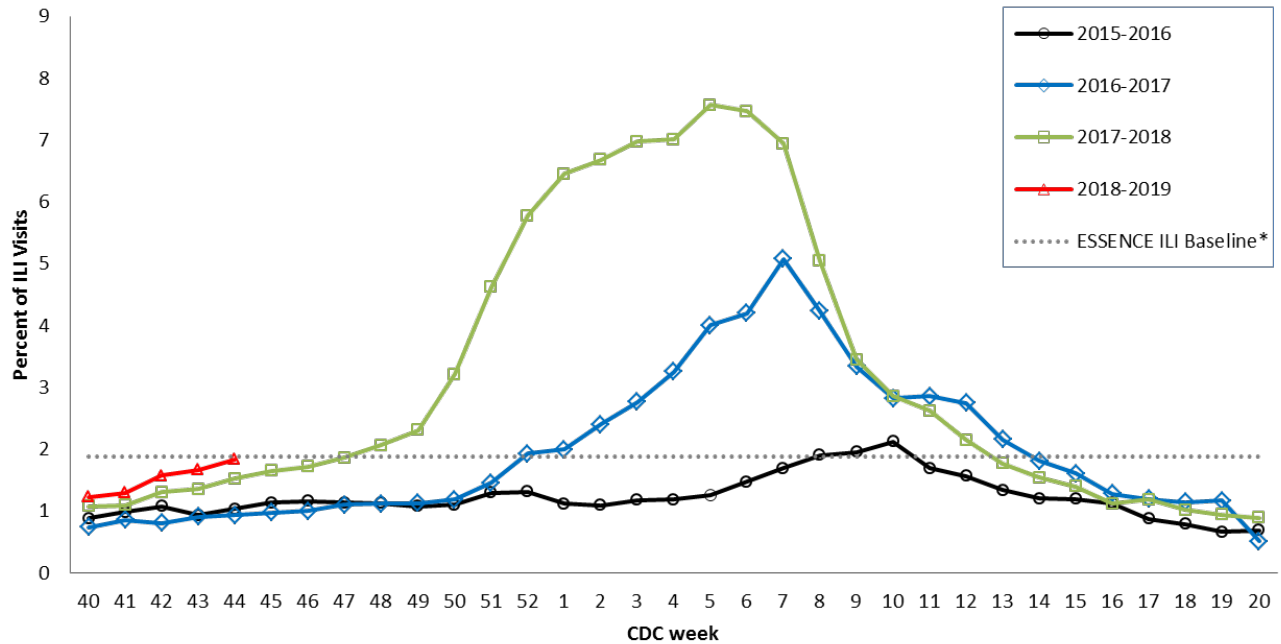
†2018-2019 season-to-date through the week ending May 18, 2019 (Week 20).

Figure 6. Season-to-Date PCR (+) Tests for Influenza in Missouri



Data Source: National Respiratory and Enteric Virus Surveillance System (NREVSS), Centers for Disease Control and Prevention (CDC). 2018-2019 season-to-date through the week ending May 18, 2019 (Week 20).

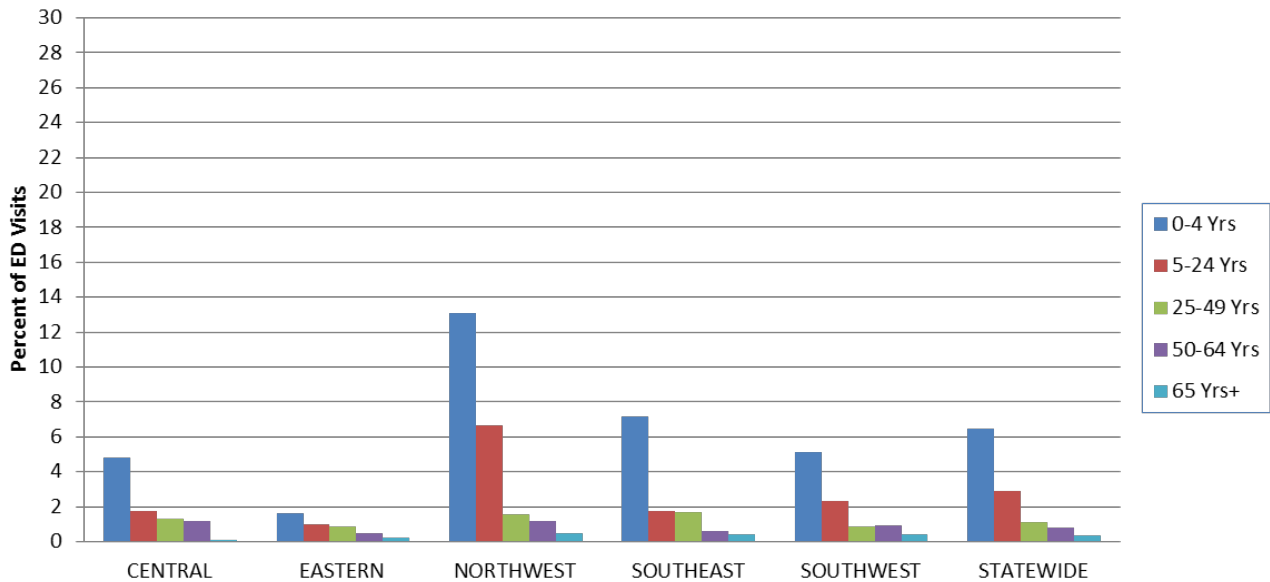
Figure 7. Percentage of Emergency Department (ED) Visits for Influenza-like Illness (ILI) in ESSENCE Participating Hospitals, 2015-2019 Influenza Seasons**



*The ESSENCE ILI Baseline is the mean percent of ILI visits for each week during the previous three years (2015-17) when percentage of ILI visits were less than 2% of total visits, plus two standard deviations. Data Source: Missouri Department of Health and Senior Services (DHSS), Bureau of Reportable Disease Informatics, ESSENCE version 1.20.

**The ILI data from a small number of sites located in the Northwest Region of the state is temporarily unavailable in ESSENCE. Therefore, the ILI data for the Northwest Region should be interpreted with caution.

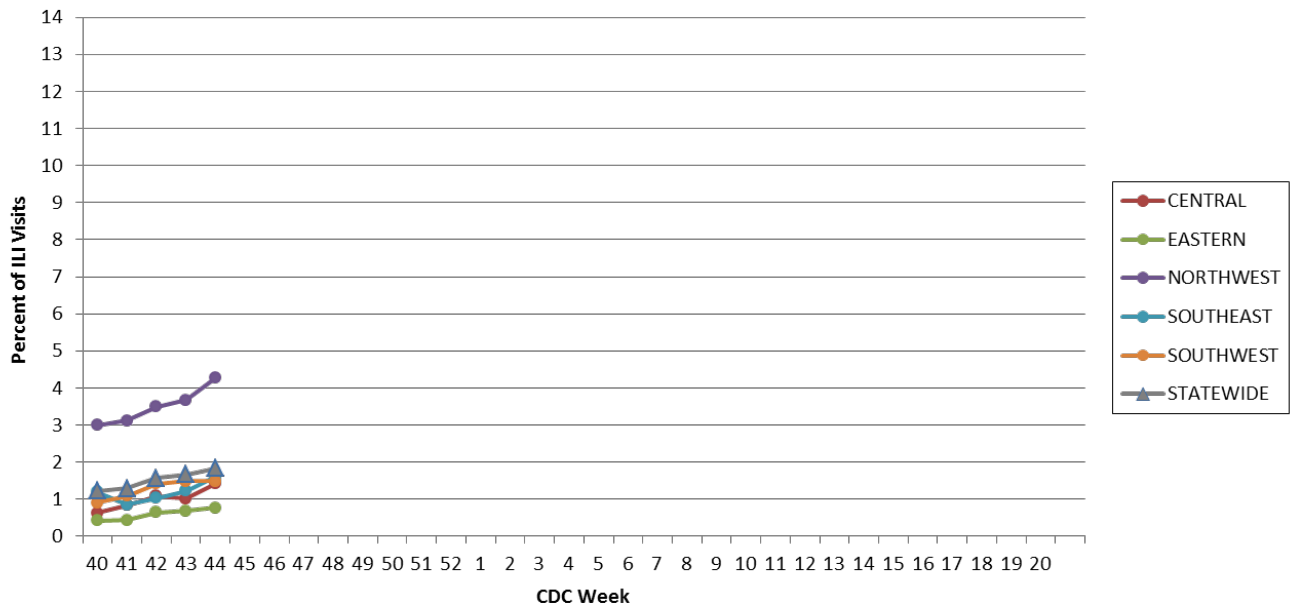
Figure 8. Percentage of Emergency Department (ED) Visits for Influenza-like Illness (ILI) in ESSENCE Participating Hospitals, by Age Group, Region and Statewide, Week 44, 2018*



Data Source: Missouri Department of Health and Senior Services (DHSS), Bureau of Reportable Disease Informatics, ESSENCE version 1.20.

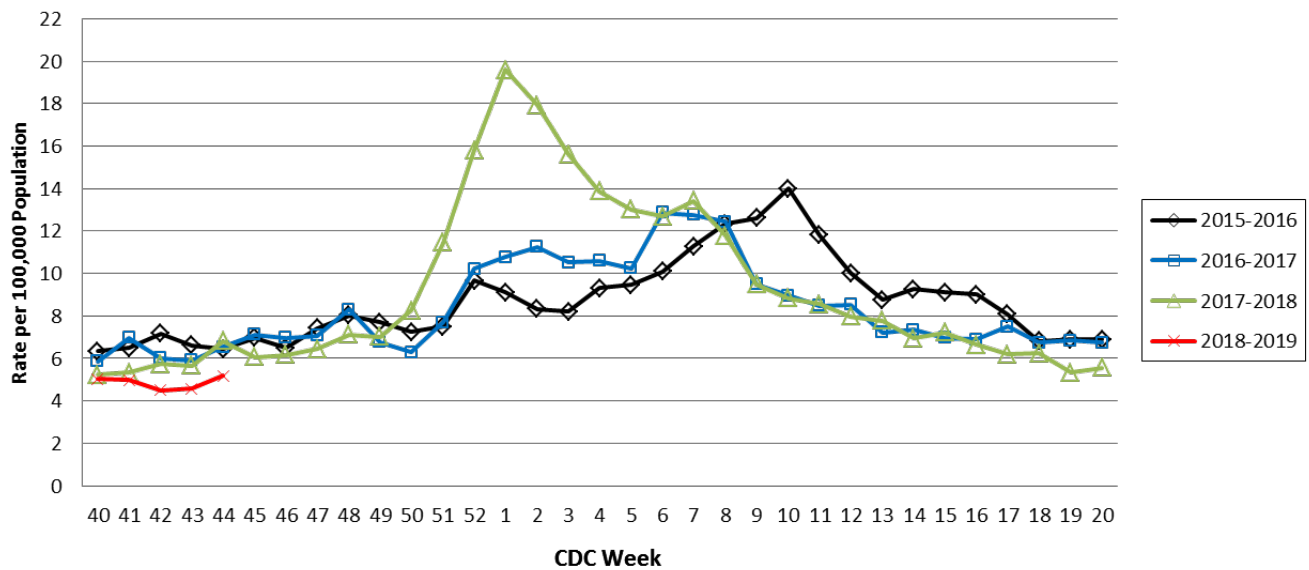
*The ILI data from a small number of sites located in the Northwest Region of the state is temporarily unavailable in ESSENCE. Therefore, the ILI data for the Northwest Region should be interpreted with caution.

Figure 9. Percentage of Emergency Department (ED) Visits for Influenza-like Illness (ILI) in ESSENCE Participating Hospitals, by Region and Statewide, 2018-2019 Influenza Season*



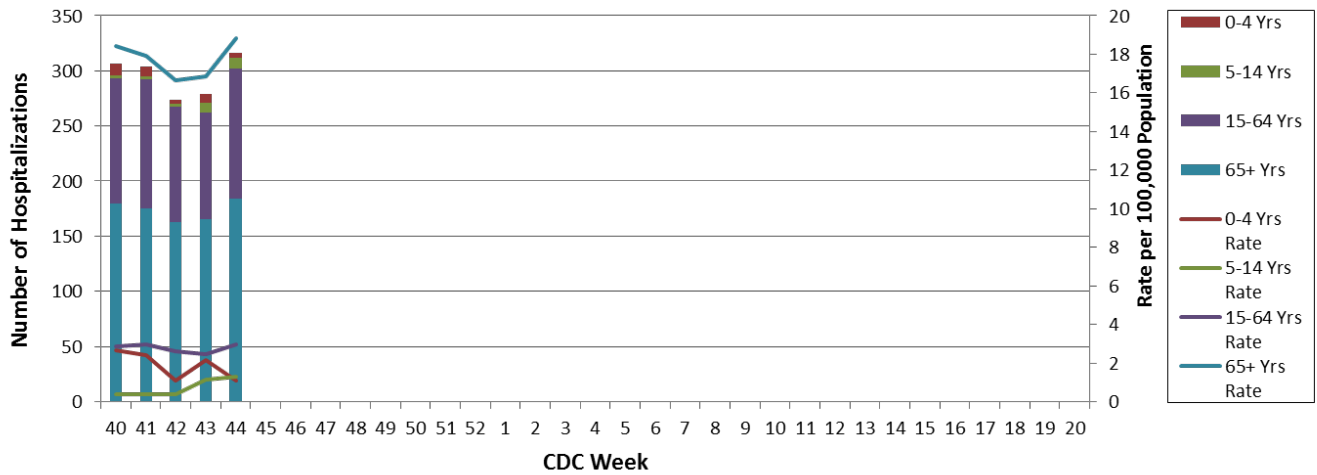
Data Source: Missouri Department of Health and Senior Services (DHSS), Bureau of Reportable Disease Informatics, ESSENCE version 1.20.
 *The ILI data from a small number of sites located in the Northwest Region of the state is temporarily unavailable in ESSENCE. Therefore, the ILI data for the Northwest Region should be interpreted with caution.

Figure 10. Weekly Rate of Patients Hospitalized with Influenza and/or Pneumonia Syndromes in Missouri Hospitals, 2015-2019 Influenza Seasons



Data Source: Missouri Department of Health and Senior Services (DHSS), Bureau of Reportable Disease Informatics, HL7 Messaging Portal.
 Population data from DHSS Population MICA 2016 (<https://webapp01.dhss.mo.gov/MOPHIMS/QueryBuilder?qbc=PNM&q=1&m=1>).

Figure 11. Number of Patients Hospitalized with Influenza and/or Pneumonia Syndromes in Participating Missouri Hospitals, by Age Group, Week 44, 2018-2019 Influenza Season



Data Source: Missouri Department of Health and Senior Services (DHSS), Bureau of Reportable Disease Informatics, HL7 Messaging Portal.

Additional Influenza Data Sources:

Centers for Disease Control and Prevention: National Influenza Surveillance (FluView):
<http://www.cdc.gov/flu/weekly/fluactivitysurv.htm>

The National Respiratory and Enteric Virus Surveillance System (NREVSS):
<https://www.cdc.gov/surveillance/nrevss/>

World Health Organization: International Influenza Surveillance:
http://www.who.int/influenza/surveillance_monitoring/en/