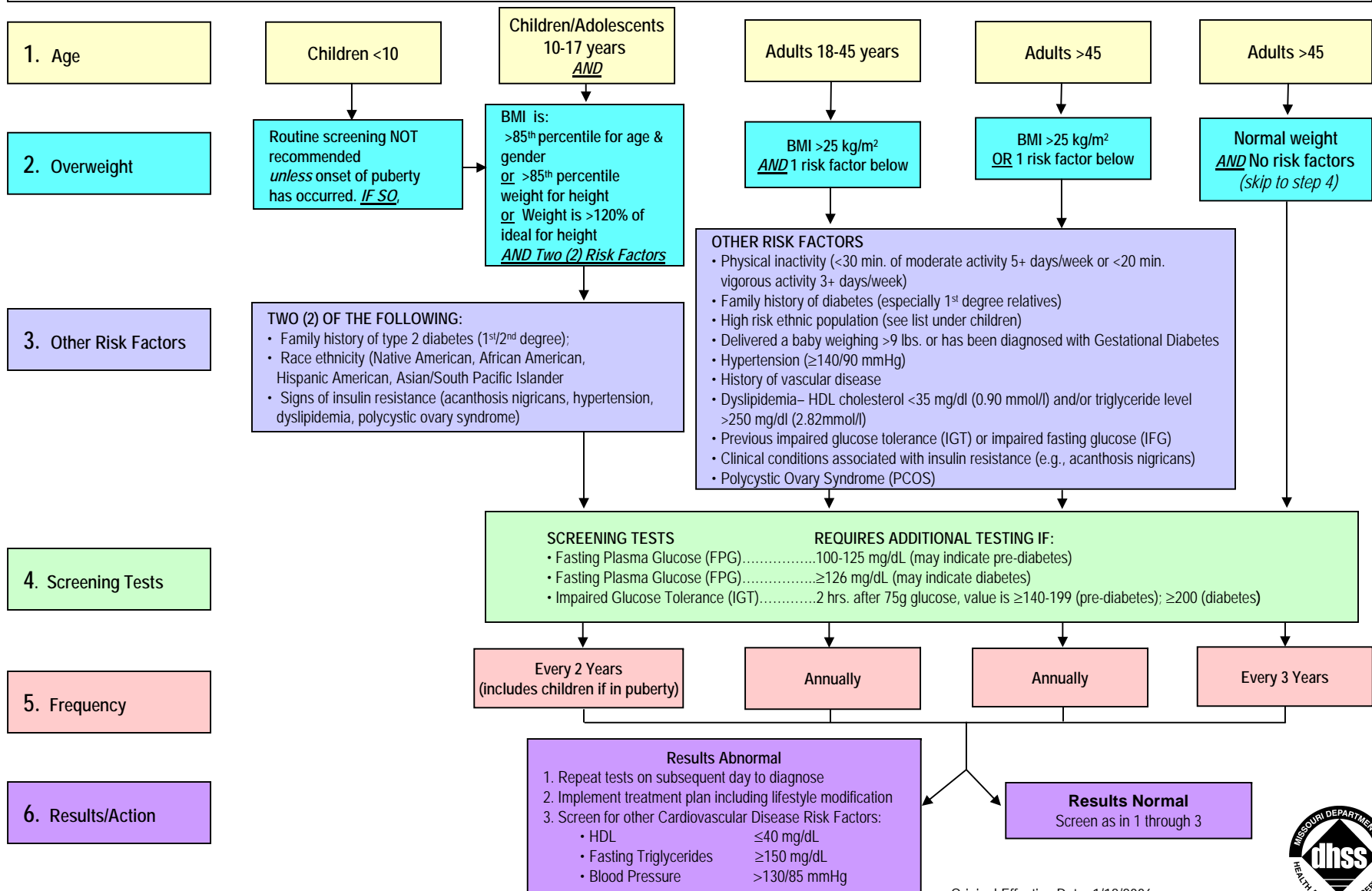


State of Missouri Consensus Screening Guidelines for Pre-diabetes and Diabetes in a Medical Setting

Developed by the Diabetes Screening Guidelines Work Group and supported by the Missouri Association of Health Plans Education and Research Foundation and the Missouri Department of Health and Senior Services

Consensus Panel Recommendations: Although the entire Missouri population is at risk for diabetes, current evidence is insufficient to recommend for or against routinely screening asymptomatic individuals for type 2 diabetes, impaired glucose tolerance, or impaired fasting glucose. The purpose of screening is to identify persons previously not diagnosed with pre-diabetes or diabetes. To effectively utilize resources, screening efforts should be directed to individuals exhibiting risks for diabetes as outlined below. Additional research is needed to determine effective approaches for screening in venues outside the medical setting.



Reference: American Diabetes Association Standards of Medical Care in Diabetes, Diabetes Care 28:S5-S7, 2005.

Original Effective Date: 1/18/2006



Diabetes Screening Guidelines Work Group

Work Group Chair

John Seidenfeld, MD, Blue Cross/Blue Shield of Missouri, Chairman of Medical Directors Council, Missouri Association of Health Plans

Missouri Association of Health Plans Education and Research Foundation

Catherine Edwards, PhD, Executive Director
Sharon Hoffarth, MD, MPH, Blue Cross/Blue Shield of Missouri
Kathleen McDarby, RN, MPH, Blue Cross/Blue Shield of Missouri
Ma'ata Touslee, RN, MBA, CCM, Children's Mercy Family Health Partners
Patty Ornce, Children's Mercy Family Health Partners
Roland G. Ruiz, MD, Cigna
Stephanie Davis, Community Care Plus
April Smith, Community Health Plan
Mary Walter, Coventry Health Care of Kansas, Inc.
Jacqueline Jones, FirstGuard Health Plan
Maureen Dempsey, MD, Great West Healthcare
Colleen Cashner, RN, CCM, Group Health Plan
Deborah Fitzgerald, HealthCare USA
Pam Victor, HealthCare USA
Brenda Moore, RN, Missouri Care Health Plan
Jordan Ginsburg, MD, UnitedHealthcare
Marla Tobin, MD, UnitedHealthcare

Missouri Association of Free Health Clinics

Nancy Zaner, FNP, KC Free Clinic

Missouri Consolidated Health Care Plan

Linda Grotewiel, RN, Manager of Clinical Review
Grace Rogers

Missouri Department of Health and Senior Services

Deborah Markenson, MS, RD, Chronic Disease Prevention and Nutrition Services
Jo Anderson, Diabetes Prevention and Control Program
Bao-Ping Zhu, MD, MS, Office of Epidemiology
Shumei Yun, MD, PhD, Office of Epidemiology

Missouri Academy of Family Physicians

George D. Harris, MD, MS
Joseph LeMaster, MD

Missouri Association of Osteopathic Physicians and Surgeons and Primaris

Carl Bynum, DO, MPH

Missouri Chapter of American Academy of Pediatrics

Kurt Midyett, MD

Missouri Chapter of American Association of Clinical Endocrinologists

Charles Kilo, MD

Missouri Primary Care Association

Deepak Malhan, MD, People's Health Centers St. Louis

St. Louis Diabetes Coalition

William Kincaid, MD

Kansas City Quality Improvement Consortium

Cathy Davis, RNCS, ANP, UAW-Ford

Washington University School of Medicine

Janet McGill, MD

University of Missouri-Columbia School of Medicine

David W. Gardner, MD

Missouri Diabetes Prevention and Control Program Advisory Board

Alan Rauba, MD
Erin Hutton, PA-C

Missouri Department of Social Services

Michael Wilson, DO, Division of Medical Services



Diabetes

1-800-316-0935

Missouri Department of Health & Senior Services

Bureau of Cancer and Chronic Disease Control

www.dhss.mo.gov/diabetes